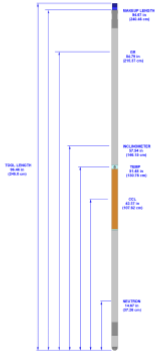


**GAMMA RAY - CCL - NEUTRON - INCLINOMETER - TEMP -  
PTX - 1 11/16 IN.**



**SKU:** 050-GN170-00CT

**Categories:** [Cased Hole Wireline](#), [CCL](#), [Formation Evaluation](#), [Gamma Ray & CCL](#), [Inclinometer](#), [Neutron](#), [PTX](#), [Temperature](#)

**PRODUCT DESCRIPTION**

**Ratings & Dimensions**

<b>Max Temperature</b>	350°F (177°C) for 4 hours
<b>Maximum Pressure</b>	20,000 psi (138 MPa)
<b>Outer Diameter</b>	1.69 in (42.93 mm)
<b>Length</b>	96.46 in (2450.084 mm)   (M/U length 94.67 in (2404.62 mm))
<b>Weight</b>	35.0 lb (15.9 kg)
<b>Min Csg/Tbg OD</b>	2.38 in (60.45 mm)
<b>Max Csg/Tbg OD</b>	7.0 in (178.0 mm)
<b>Tensile Strength<sup>1</sup></b>	<b>Tension:</b> 65,000 lb <b>Compression:</b> 130,000 lb <b>Torque:</b> 150 ft-lb
<b>Measure Points</b>	<b>GR:</b> 84.79 in (2153.67 mm) <b>CCL:</b> 42.37 in (1076.2 mm) <b>NEU:</b> 14.67 in (372.62 mm) <b>INC:</b> 57.54 in (1461.52 cm) <b>TEMP:</b> 51.48 in (1461.52 cm)

**Borehole Conditions**

<b>Borehole Fluids</b>	Salt, Fresh and Oil
<b>Logging Speed</b>	<b>Recommended:</b> 60 ft/min (18.2 m/min) <b>Maximum:</b> 100 ft/min (30.5 m/min) at 0.08 ft (.02 m) sample rate
<b>Tool Positioning</b>	Centralized   Eccentralized

**Calibration**

<b>Primary</b>	Houston API Pits
----------------	------------------

Wellsite Verifier

Thorium Blanket

## Electrical Specifications

Operating V / Current

130V DC @ 45 mA

## Hardware Characteristics

	Gamma Ray	Casing Collar Locator	Neutron	Inclinometer
<b>Sensor Type</b>	Thallium Activated Sodium Iodide Crystal	Dual Magnet, Center Coil	Helium-3 filled Neutron Detector	3-Axis Accelerometer
<b>Transmission Type</b>	Digital Telemetry	Line Wobble or Telemetry	Digital Telemetry	Digital Telemetry
<b>Data Rate</b>	20 frames / sec @ 20 kHz			
<b>Combinability</b>	RADII & CBT (Bottom only)			
<b>Connections</b>	GO top, Source sub bottom (no feedthrough)			
<b>Temp Specs</b>	<b>Sensor:</b> RTD (1000)   <b>Trans Type:</b> Digital Telemetry   <b>Prim Curve:</b> TEMP(°F/C)   <b>Calibration:</b> 2pt linear			

## Measurements

	Natural Gamma Radiation	Magnetic Flux Lines	Thermal Neutron Detector	Gravity Vector
<b>Principle</b>				
<b>Range</b>	0-10,000 cps	2.38 in to 7.0 in (60.452 mm to 178.0 mm)	200 to 2,000 cps	± 2 g
<b>Vert Resolution</b>	6.0 in (152.5 mm)	NA	NA	NA
<b>Accuracy (1SD)</b>	± 5%	NA	± 0.07%	± 0.5 degrees
<b>Sensitivity</b>	~0.998 cps/API unit	NA	15 cps/nv	900 lsb/g
<b>Primary Curves</b>	GR (API)	CCL (mV)	NEU (API)	Inclination
<b>Secondary</b>	Head Voltage, Internal Temperature (Telemetry Only)			

<sup>1</sup>Strengths apply to new tools at 70°F (21°C) and 0 psi.

Version Control: 2021.12.09

**On-line specifications are for REFERENCE ONLY and subject to change without notice. DO NOT USE FOR FIELD OPERATIONS.**