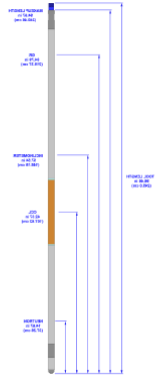


GAMMA RAY - CCL - NEUTRON - INCLINOMETER TOOL - PTX - 1 11/16 IN.



SKU: 050-GN170-00C3

Categories: [Cased Hole Wireline](#), [CCL](#), [Formation Evaluation](#), [Gamma Ray & CCL](#), [Inclinometer](#), [Neutron](#), [PTX](#)

PRODUCT DESCRIPTION

Ratings & Dimensions

Max Temperature	350°F (177°C) for 4 hours
Maximum Pressure	20,000 psi (138 MPa)
Outer Diameter	1.69 in (42.93 mm)
Length	96.46 in (2450.084 mm) (M/U length 94.67 in (2404.62 mm))
Weight	35.0 lb (15.9 kg)
Min Csg/Tbg OD	2.38 in (60.45 mm)
Max Csg/Tbg OD	7.0 in (178.0 mm)
Tensile Strength¹	Tension: 65,000 lb Compression: 130,000 lb
Measure Points	Torque: 150 ft-lb
	GR: 84.79 in (2153.67 mm) CCL: 42.37 in (1076.2 mm)
	NEU: 14.67 in (372.62 mm) INC: 57.54 in (1461.52 cm)

Borehole Conditions

Borehole Fluids	Salt, Fresh and Oil
Logging Speed	Recommended: 60 ft/min (18.2 m/min) Maximum: 100 ft/min (30.5 m/min) at 0.08 ft (.02 m) sample rate
Tool Positioning	Centralized Eccentralized

Calibration

Primary	Houston API Pits
----------------	------------------

Wellsite Verifier

Thorium Blanket

Electrical Specifications

Operating V / Current

130V DC @ 45 mA

Hardware Characteristics

	Gamma Ray	Casing Collar Locator	Neutron	Inclinometer
Sensor Type	Thallium Activated Sodium Iodide Crystal	Dual Magnet, Center Coil	Helium-3 filled Neutron Detector	3-Axis Accelerometer
Transmission Type	Digital Telemetry	Line Wobble or Telemetry	Digital Telemetry	Digital Telemetry
Data Rate	20 frames / sec @ 20 kHz			
Combinability	RADII & CBT (Bottom only)			
Connections	GO top, Source sub bottom (no feedthrough)			

Measurements

	Natural Gamma Radiation	Magnetic Flux Lines	Thermal Neutron Detector	Gravity Vector
Principle				
Range	0-10,000 cps	2.38 in to 7.0 in (60.452 mm to 178.0 mm)	200 to 2,000 cps	± 2 g
Vert Resolution	6.0 in (152.5 mm)	NA	NA	NA
Accuracy (1SD)	± 5%	NA	± 0.07%	± 0.5 degrees
Sensitivity	~0.998 cps/API unit	NA	15 cps/nv	900 lsb/g
Primary Curves	GR (API)	CCL (mV)	NEU (API)	Inclination
Secondary	Head Voltage, Internal Temperature (Telemetry Only)			

¹Strengths apply to new tools at 70°F (21°C) and 0 psi.

Version Control: 2021.12.09

On-line specifications are for REFERENCE ONLY and subject to change without notice. DO NOT USE FOR FIELD OPERATIONS.